



Obtain an entry permit via the “Shizuoka Prefecture FUJI NAVI” app.
Using the app to obtain an entry permit lets you start climbing right away.
Map features and push notifications for weather and other information will help ensure a safe, pleasant climb on Mt. Fuji.

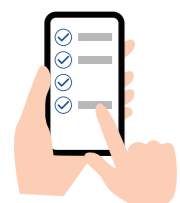
Pre-registration begins on May 8, 2026



- ① Access the website.
- ② Install Shizuoka Prefecture’s official app, “Shizuoka Prefecture FUJI NAVI” on your smartphone.



※ Get the app on the App Store or Google Play (free).

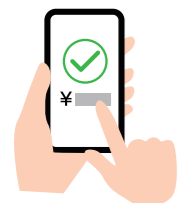


- ③ Completing advance study
Please study in advance (e-learning) using video or text and take the quiz on Mt. Fuji.

To receive the entry permit, you are required to correctly answer all questions on the Mt. Fuji quiz.



- ④ Climbing information registration
Fill out climbing information, etc. (date of climb, your full name, whether or not staying overnight at a mountain hut, etc.)



- ⑤ Entry fee payment
Choose a payment method (credit card, e-money, etc.) and pay the 4,000-yen, per-person entry fee.

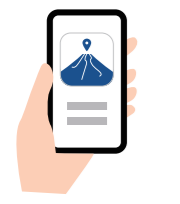
※ If you decide not to enter the mountain, please complete the refund procedure yourself.



- ⑥ Receiving an entry permit
After filling out information on the person using the entry permit, an entry permit (QR code) will be shown.



- ⑦ On the day of the climb, show the entry permit on site.
Launch Shizuoka Prefecture’s official app and show the entry permit to the on-site staff.



- ⑧ Use the app for a safe and comfortable climb.
You can check the travel time to your destination using the app’s map features.
You can receive push notifications on weather and other information.

FAQs

Q1 What should minors without a smartphone do?

A1 A companion (guardian) can simultaneously register the minor. The procedure can also be conducted on site without a smartphone.

Q2 I plan to climb Mt. Fuji several times during climbing season. Do I have to pay the 4,000-yen entry fee each time?

A2 Each person must pay 4,000 yen each time he/she climbs.

Q3 Is the entry fee for children also 4,000 yen?

A3 Children must also pay the 4,000-yen entry fee. However, the entry fee is waived for curriculum-based educational activities through application in advance.

Q4 I want to do some sightseeing at the fifth station. Do the climbing regulations apply?

A4 The regulations do not apply to the Mt. Futago Course on the Gotemba Trail, Kofuji Course on the Subashiri Trail, and visiting Komitake Shrine. The regulations apply to the Hiei Crater Course on the Fujinomiya Trail.

Q5 Is there a limit placed on the number of climbers?

A5 On the Shizuoka Prefecture side, there is no set limit placed on the number of climbers.

Q6 I want to learn more about the regulations.

A6 Please refer to the “Official Website for Mt. Fuji Climbing” or “The Complete Guide to Mt. Fuji [A World Heritage Site].”



Official Website for Mt. Fuji Climbing



The Complete Guide to Mt. Fuji [A World Heritage Site]

Inquiries

Mt. Fuji World Heritage Division, Sports, Culture and Tourism Department, Shizuoka Prefecture
Telephone 054-221-3746

2026

Mt. Fuji Climbing Regulations in Shizuoka Prefecture

Aim to protect the beauty and sacredness of Mt. Fuji, a World Heritage Site, and achieve an environment where everyone can climb Mt. Fuji in safety and comfort. Let’s strive to pass on the world treasure that is Mt. Fuji to the next generation.

Fujinomiya Trailhead

Gotemba Trailhead

Subashiri Trailhead

A commemorative gift will be given at the trailhead to those who pre-register using the “Shizuoka Prefecture FUJI NAVI” app!

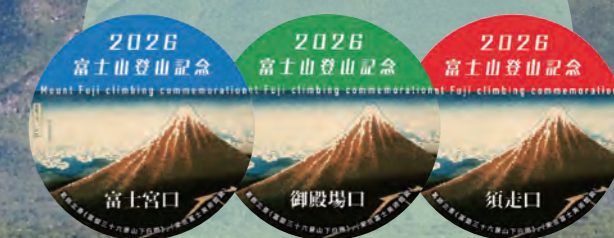


Photo is for illustrative purposes only.

1 Learn rules and manners related to preserving and safely climbing Mt. Fuji in advance.

e-learning or onsite learning at each trailhead
You can readily start climbing by completing the e-learning before arriving at the trailhead

2 Entry fee payment 4,000 yen per person/entry

The entry fee will be used to create an environment enabling safe and pleasant climbing, and for endeavors that protect the beautiful nature. Payment is an ordinance-based requirement.

3 Climbers entering the mountain between 2:00 p.m. and 3:00 a.m. the following day are required to stay overnight at a mountain hut.

You can enter the mountain by fulfilling the above three conditions.



The entry procedure is to obtain an entry permit via the “Shizuoka Prefecture FUJI NAVI” app.

Climbing season (tentative)
Fujinomiya Trailhead & Gotemba Trailhead : July 10 – Sept. 10
Subashiri Trailhead: July 1 – Sept. 10
*The opening date may be delayed depending on remaining snow conditions.

Pre-registration begins
From May 8, 2026

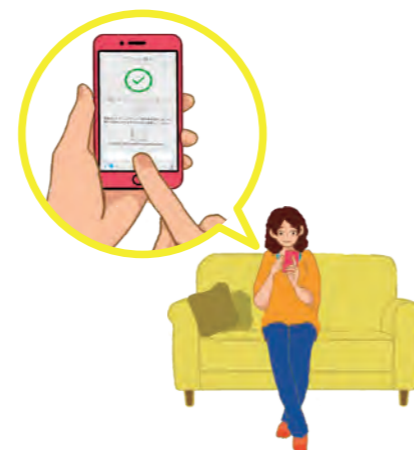
Shizuoka Prefecture

The process up until climbing Mt. Fuji

At each of the fifth stations, you must show the entry permit to start climbing. You must also show the entry permit when asked to do so by a staff member during the climb.

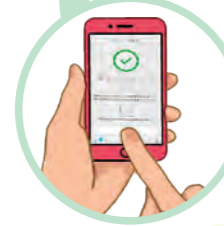
If you have not obtained an entry permit in advance, you can carry out the procedure that includes advance study, filling out and submitting forms, and paying the entry fee at each of the fifth stations.

Use the "Shizuoka Prefecture FUJI NAVI" app to prepare yourself to start climbing smoothly.



If you have obtained an entry permit (QR code) via the app

Easy and fast



At the entry hut at each trailhead, launch the "Shizuoka Prefecture FUJI NAVI" app and show the QR code to staff. When entering between the hours of 2:00 p.m. and 3:00 a.m., you must also show confirmation that you are lodging at a mountain hut.



After your entry permit is verified, you will receive a wristband.



Start climbing.

When you have not obtained an entry permit



Fill out information required for the registration form (date of climb, your full name, whether or not staying overnight at a mountain hut, etc.) at the learning facility.



Please complete the pre-study at the learning hut.



Submit the forms, etc. at the entry hut and pay the 4,000-yen, per-person entry fee. Climbers entering the mountain between 2:00 p.m. and 3:00 a.m. the following day are required to stay overnight at a mountain hut.



Take the entry permit and wristband.

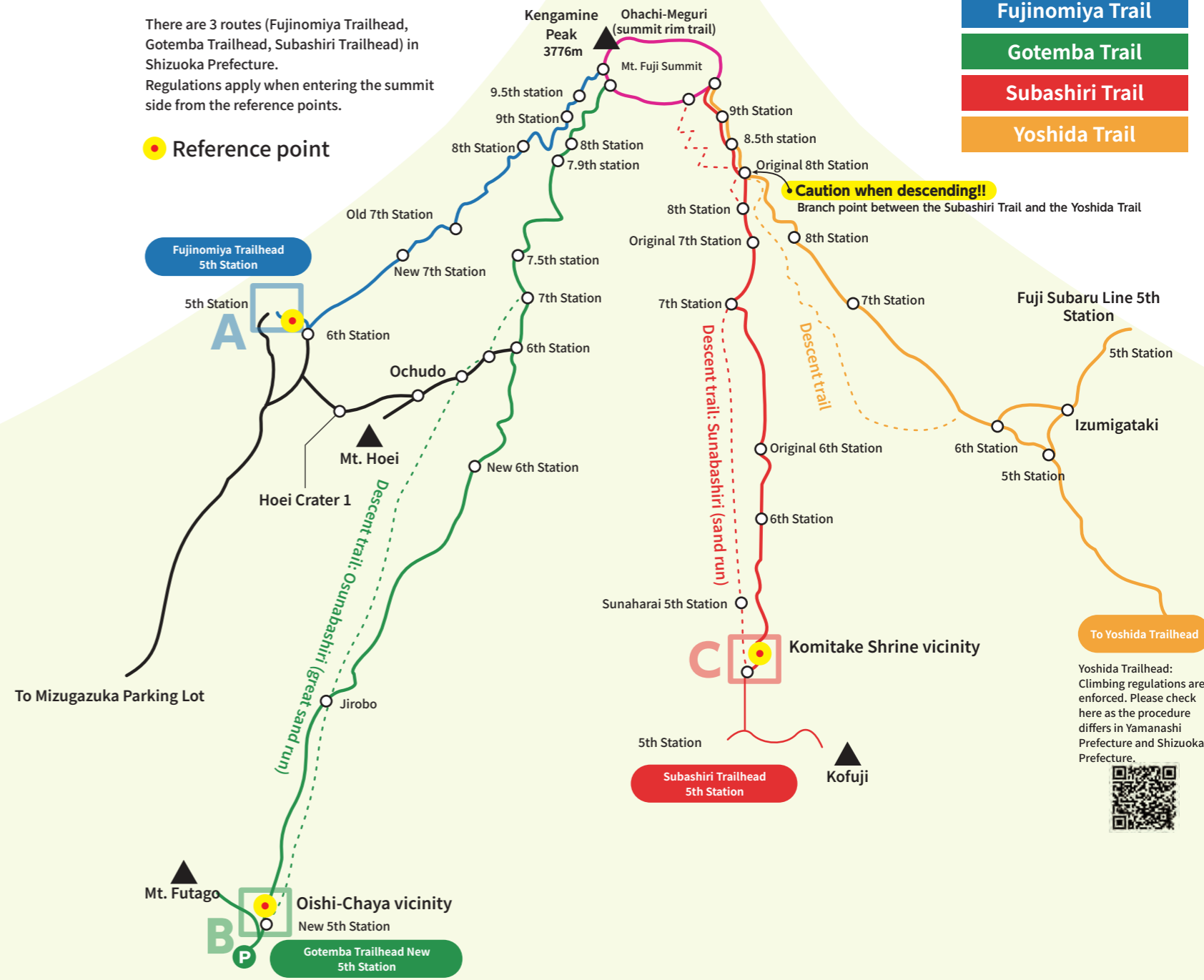


Start climbing.

Climbing regulation reference points

There are 3 routes (Fujinomiya Trailhead, Gotemba Trailhead, Subashiri Trailhead) in Shizuoka Prefecture. Regulations apply when entering the summit side from the reference points.

Reference point



Trail Name/Color Code
The main trails on Mt. Fuji are color coded.

Fujinomiya Trail
Gotemba Trail
Subashiri Trail
Yoshida Trail

Caution when descending!!
Branch point between the Subashiri Trail and the Yoshida Trail

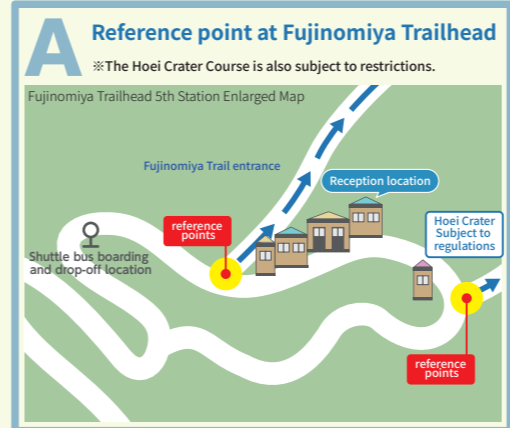
To Yoshida Trailhead
Yoshida Trailhead: Climbing regulations are enforced. Please check here as the procedure differs in Yamanashi Prefecture and Shizuoka Prefecture.



Fujinomiya Trail

- Shortest distance to the summit
- Since the ascent and descent trails are the same, be careful when passing others.

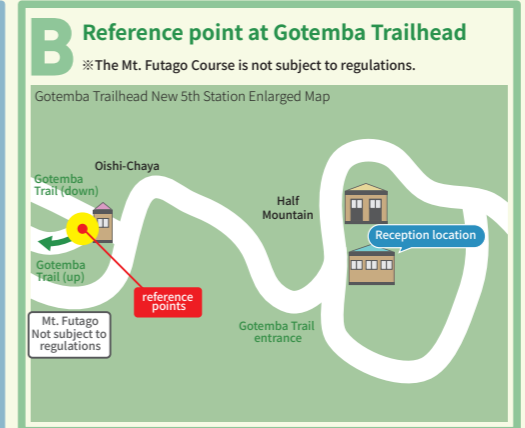
Time required from 5th station to summit:
Approx. 5 hr. to ascend, approx. 3 hr. to descend
*There are regulations on private vehicles



Gotemba Trail

- Osunabashiri (great sand run): Descend 1,000 meters in elevation at once
- This is the longest of the 4 routes and is suited for experienced, physically fit climbers.

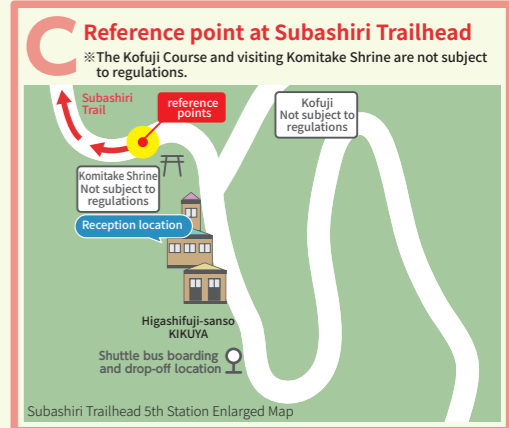
Time required from the New 5th Station to the summit:
Approx. 9 hr. to ascend, approx. 4 hr. to descend



Subashiri Trail

- Green, wooded area up to the New 6th Station
- Be careful not to get lost in bad weather

Time required from 5th station to summit:
Approx. 7 hr. to ascend, approx. 4 hr. to descend
*There are regulations on private vehicles



*The time required for each route is an estimate. Please plan your climb with plenty of time, taking into account your physical strength and other factors.